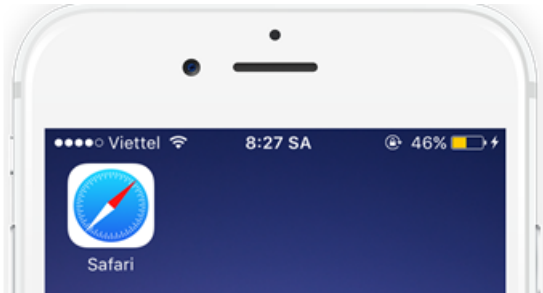


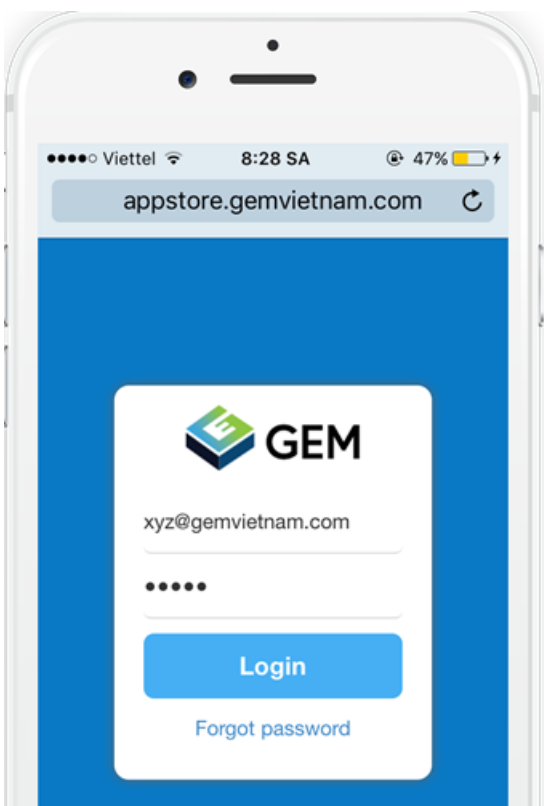
INSTALLATION GUIDE

To install Moola app, please take these following steps:

Step 1: Opening a browser like Safari on your phone.



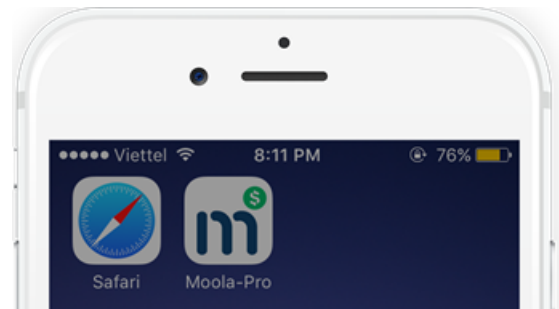
Step 2: Filling following address <http://AppStore.GEMVietnam.com> and use your provided account to login.



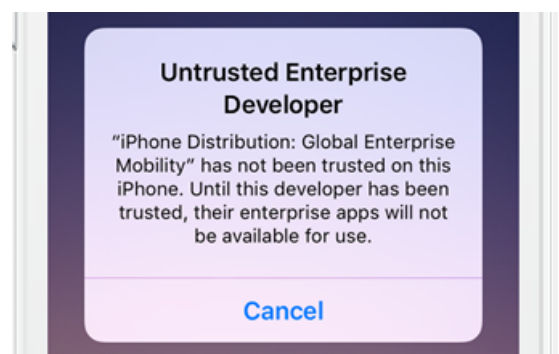
Step 3: Choosing the newest **Moola** version, then click "INSTALL" to install the app



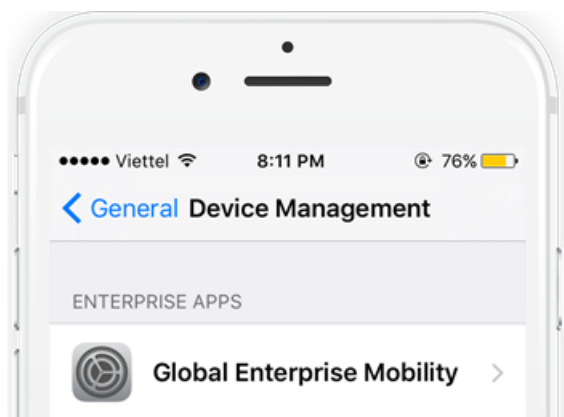
Step 4: After installing, home screen appears Moola icon



Touch on icon and receive following message. Choose 'Cancel' to continue using app



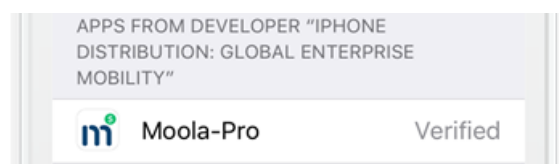
Step 5: Choose Setup -> General -> Device Management and choose 'Global Enterprise Mobility'



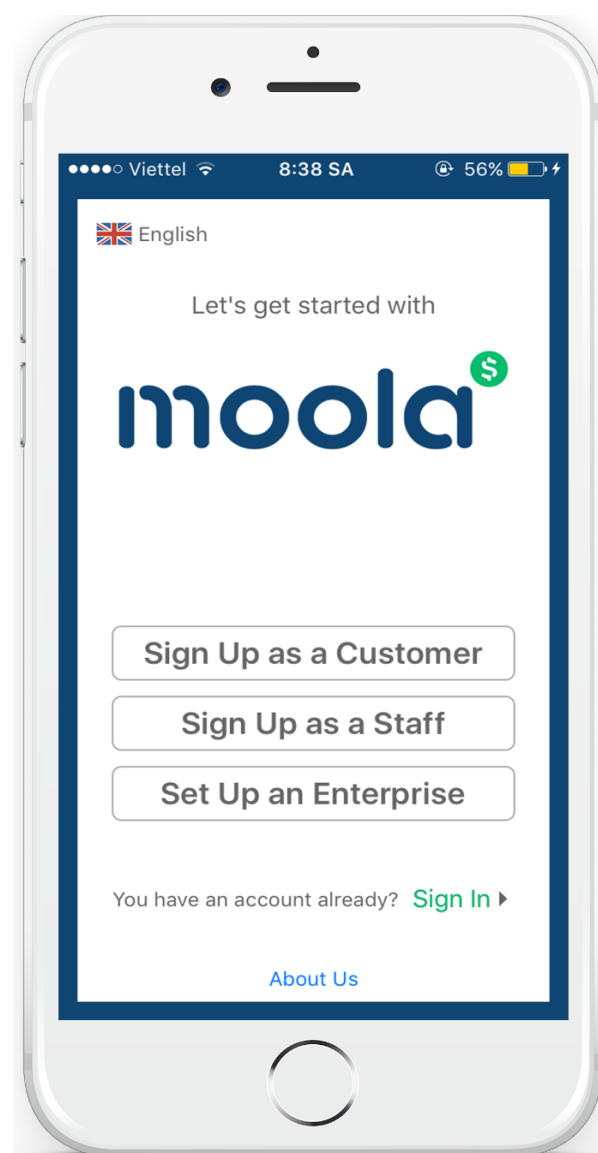
Step 6: Choose 'Trust' to allow using app of Global Enterprise Mobility

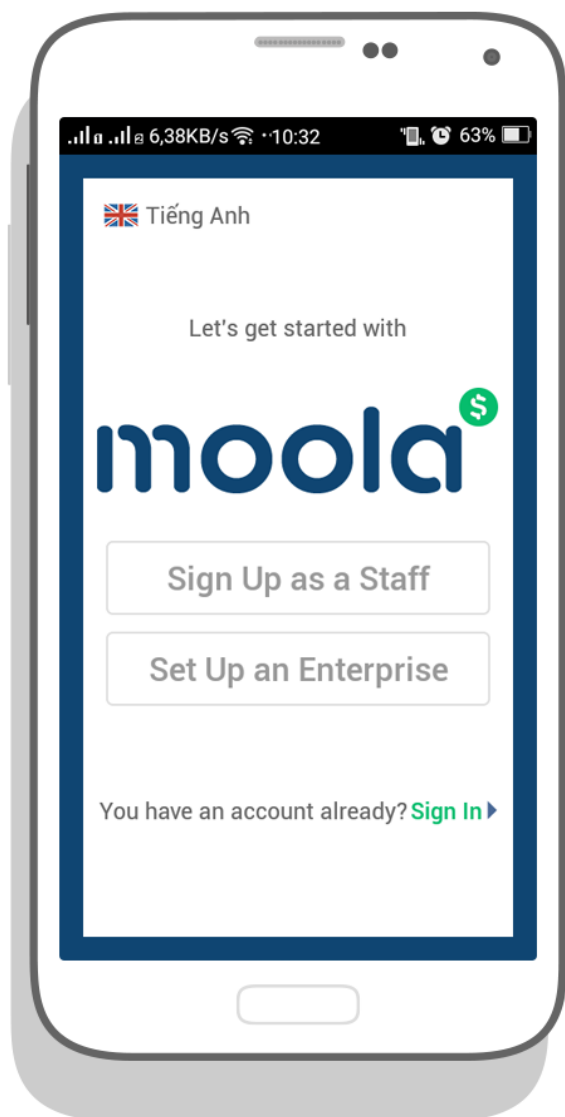


Following message means setting up successfully :



Step 7: Here is the screen for the first time opening the app





You can use **Moola** for your enterprise by click “Set up an Enterprise” or sign in by click “Sign In” if you have an account, or sign up as staff by click “Sign up as a Staff” if you receive an invitation code from administrator.

WAS THIS HELPFUL?